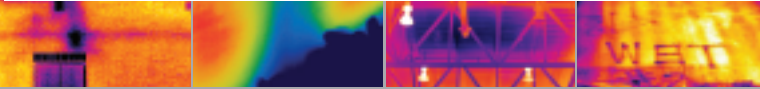


# BCAM™ SD

YOUR BUILDING INSPECTOR



The new and improved SD model of the BCAM gives you more image storage, more image quality and more post-processing capabilities! The BCAM SD infrared camera offers a non-invasive means of monitoring and diagnosing the conditions of building.



- > Stores up to 1,000 JPEG Images
- > Improved Crisp, High Quality Images
- > 7 Hour Battery Operating Time
- > Bright 3.5" LCD
- > Built-in Laser LocatIR™
- > Includes New Powerful QuickReport Software
- > Easy-to-operate
- > Dew Point, Insulation and Color Alarm Features

### Find Problems Fast

Monitor and diagnose the condition of buildings quickly and view crisp thermal images on the large 3.5" color LCD. Highlight and analyze problems, store images and document results.

### Rugged, Ergonomic & Lightweight

Hold in your hand, clip to your belt or place in your toolbox, the BCAM SD weighs just 1.25 lbs. It is the lightest IR and thermal imaging storage camera in the world. Dust and splash proof, the BCAM SD meets IP 54 standards and withstands harsh industrial environments.

### Flexible JPEG Image Storage

InfraCAM SD stores 1,000 images in standard radiometric JPEG format. Insert your images directly into email, MicroSoft® Word or Powerpoint.® Recall, analyze and share your findings with others in the field using the camera's LCD. With the new SD card, you are no longer tethered to your computer!

### Pinpoint Problems with Precision

The built-in Laser LocatIR™ quickly helps you associate the hot spot on the IR image with the real physical target. This feature greatly enhances the ability to target inconsistencies.

### View Sensitive Thermal Images

Now with improved sensitivity, you can see smaller temperature differences and get sharper images! A maintenance-free, state-of-the-art uncooled FPA infrared detector produces highly sensitive thermal images that allow you to detect subtle temperature variations that can signal moisture content in building materials.

### Download and Report! QuickReport Software

Download thermal images to your PC quickly with QuickView™ software and standard USB cables. Powerful, easy-to-use software for downloading images, making analysis and reports. The BCAM SD is also compatible with the new, feature-rich ThermoCAM® Reporter 8 Software.

### Smart Power Management

Lightweight, long life Li-Ion battery assures uninterrupted inspections for up to 7 hours on a single charge. BCAM SD includes an internal battery charger and one battery. Optional car/truck charger and additional batteries are available.

### Automatic Color Alarm

The BCAM SD features an automatic color alarm to quickly alert users to moisture-laden areas during building scans – invaluable to detect potential areas of mold growth, as well as verify when structures are moisture-free during the drying out process.

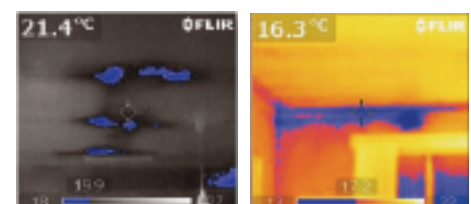
### Fast Detection for Fast Action

Instantly image entire rooms, inspect places that can't be physically reached with moisture meters, reveal wet conditions behind surfaces such as enameled walls and wallpaper that don't readily water stain, track leaks to their source, monitor the drying process, and confirm when a structure is dry.

Now even easier to use with the "Area min-max function" that instantly finds the hottest or coldest temperature of a target and eliminates the risk of missing key information.

### Find Insulation Defects & Prevent Moisture Damage

With the insulation alarm you can easily detect areas that don't fulfill the insulation requirements. The Dew point Alarm displays areas with risk of surface condensation where mold growth could occur.



Insulation Alarm

Dew Point Alarm

# BCAM SD™ Technical Specifications

|  |   |
|--|---|
| <b>Imaging Performance</b>               |   |
| Field of view/min focus distance         | Fixed 25° x 25°/0.3m  |
| Measurement mode                         | One fixed spot, color alarm above/below, dew point alarm and insulation alarm             |
| Detector type                            | Focal plane array (FPA) uncooled microbolometer;<br>120 x 120 pixels                      |
| Spectral range                           | 7.5 to 13 µm  |
| <b>Image Presentation</b>                |   |
| Display                                  | 3.5" color LCD, 240 x 240 pixels  |
| Video output                             | MPEG-4 over USB   |
| Image controls                           | Palettes (color, B/W), level, span, auto adjust (continuous/manual)                       |
| Set-up controls                          | Date/time, language (English, Spanish), info, LCD intensity (high/normal/low), power down |
| Temperature range                        | -10° C to +100° C (+14° F to +212° F)   |
| <b>Image Storage</b>                     |   |
| Digital storage functions                | Store, Delete all images, Delete image, Open  |
| Image storage                            | 1000 JPEG Images, removable SD Card (128MB - included)                                    |
| <b>Laser LocatIR</b>                     |   |
| Classification                           | Class 2   |
| Type                                     | Semiconductor AlGaInP Diode Laser: 1mW/635 nm (red)                                       |
| <b>Power Source</b>                      |   |
| Battery type                             | Li-Ion  |
| Battery operating time                   | 7 hours. Display shows battery status   |
| Charging system                          | In camera, AC adapter or 12V from car with optional 12V cable.                            |
| AC operation                             | AC adapter 90-360 VAC, 50/60 Hz / 12VDC out   |
| Voltage                                  | 11-16 VDC   |
| Power saving                             | Automatic shutdown (user-selectable)  |
| <b>Environmental</b>                     |   |
| Operating temperature range              | -15° C to +50° C (+5° F to 122° F)  |
| Storage temperature range                | -20° C to +70° C (-4° F to 158° F)  |
| Humidity                                 | Operating and storage 20% to 80%, non-condensing, IEC 359                                 |
| Water and dust resistant (encapsulation) | IP 54   |
| Shock                                    | 25G, IEC 68-2-29  |
| Vibration                                | 2G, IEC 68-2-6  |
| <b>Physical Characteristics</b>          |   |
| Weight                                   | <1.25 lbs. (0.55kg), including battery  |
| Size (L x W x H)                         | 243mm x 81mm x 103mm (9.6" x 3.2" x 4.1")   |
| Color                                    | Red   |
| Tripod Mounting                          | Standard, 1/4" - 20   |
| <b>Interfaces</b>                        |   |
| USB                                      | Image transfer to PC  |

|   |
|---|
| <b>BCAM SD System Includes:</b>                 |
| IR camera with lens and built-in Laser LocatIR™ |
| Ruggedized transport case                       |
| Power supply                                    |
| Hand strap                                      |
| Lens cap  |
| QuickView™ software                             |
| USB cable                                       |
| 128MB SD Card                                   |
| User manual                                     |
| Power cord                                      |
| 1 Battery                                       |



**NEW!** SD card that stores up to 1,000 infrared images. Move and print standard radiometric JPEG images to a computer and your printer without cables.



The thermogram of this vinyl-sided 3-floor apartment building clearly shows the path of a serious leak, completely hidden within the wall, from a washing machine on the third floor.

